

TOWELRADS HORTON COLLECTION



The Horton is a simple and effective design with open bars for maximum towel storage space.

This rail can be mounted left or right and being available in over 12 different colour finishes, including Rose Gold, Slate Grey, Black and Silver; it's sure to suit any space.

Safety tested at **13 bar pressure.**

Normal household pressure is well **under 5 bar.**



10
YEARS
Manufacturers
Warranty



Works with both
central heating and
electric fuel sources



1-2 Day Delivery



Available in variety of
RAL colours

FEATURES AND BENEFITS

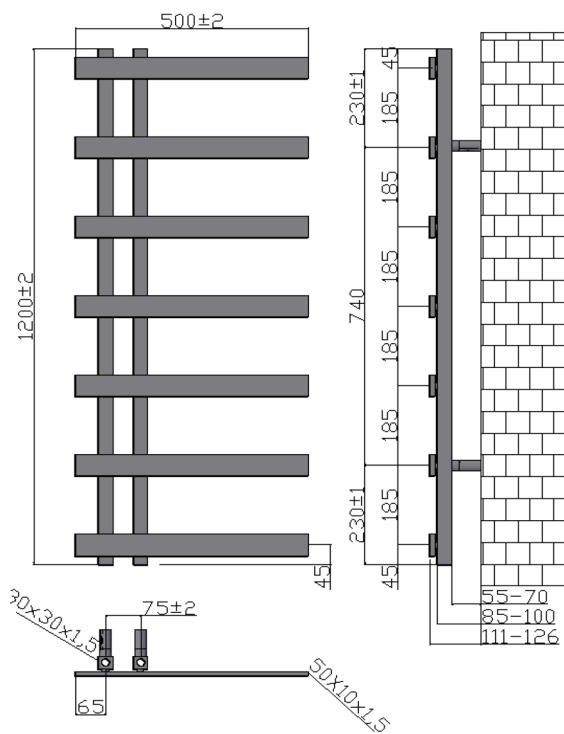
- Can be mounted facing left or right.
- This product can also be fitted with an electric dual fuel element.
- Modern & stylish design.
- Available in a range of contemporary colours.

HORTON

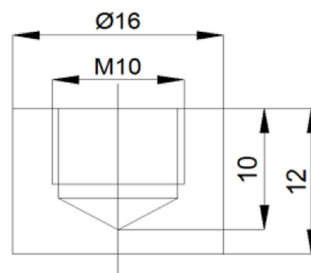
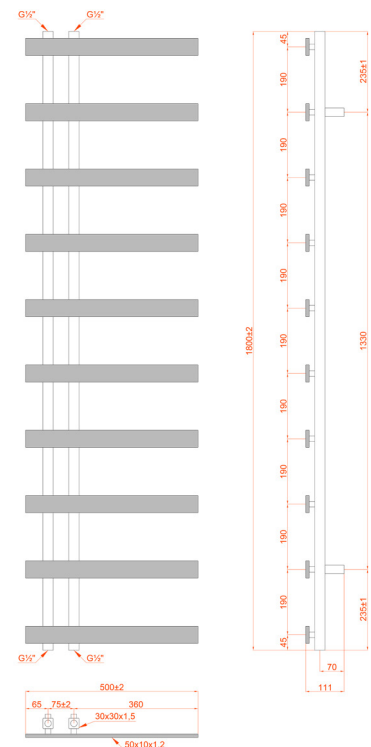
Colour	Height	Length	Product Code	Output at $\Delta T50k$	
				Watts	BTU
Chrome	1200	500	128028	263	897
Black	1200	500	120884	396	1352
	1800	500	120885	570	1945
Anthracite	1200	500	120886	396	1352
	1800	500	120887	570	1945

TECHNICAL DIAGRAMS HORTON COLLECTION

1200x400MM
CONFIGURATION



1800x500MM
CONFIGURATION



BRACKET PIN Ø16